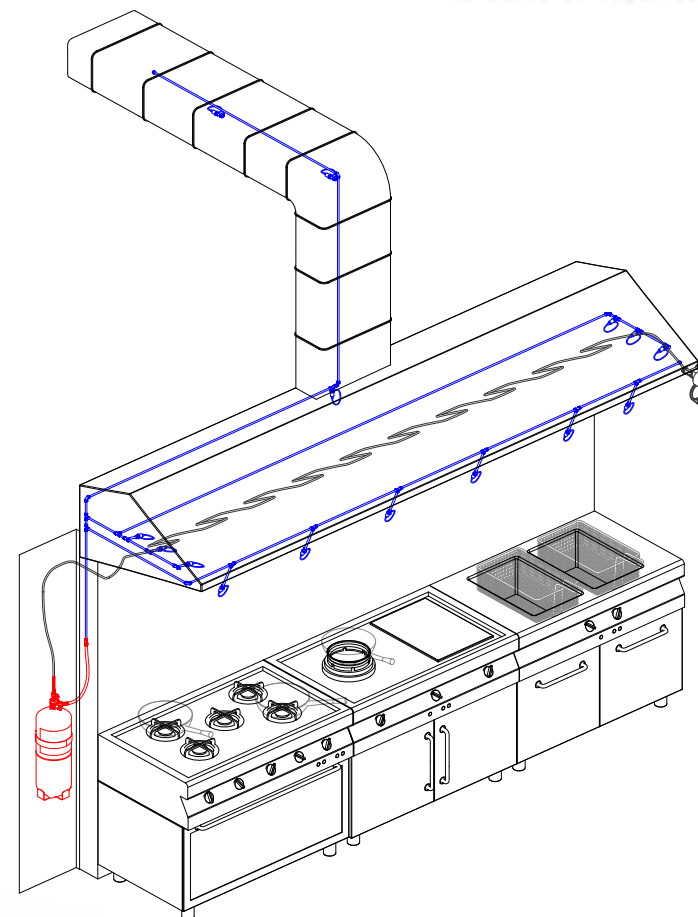


ELITE-K12 (no. technical assessment number of suitability: ETI 2005)

fire extinguishing systems in commercial kitchens



Brochure and specifications

BENEFITS

- **Quick and easy installation**
- **Easy maintenance**
- **Quick and easy cleaning**
- **Reduced system**
 - >> No need of large storing room
- **Non-corrosive**
- **Environmentally friendly**
 - >> Eco

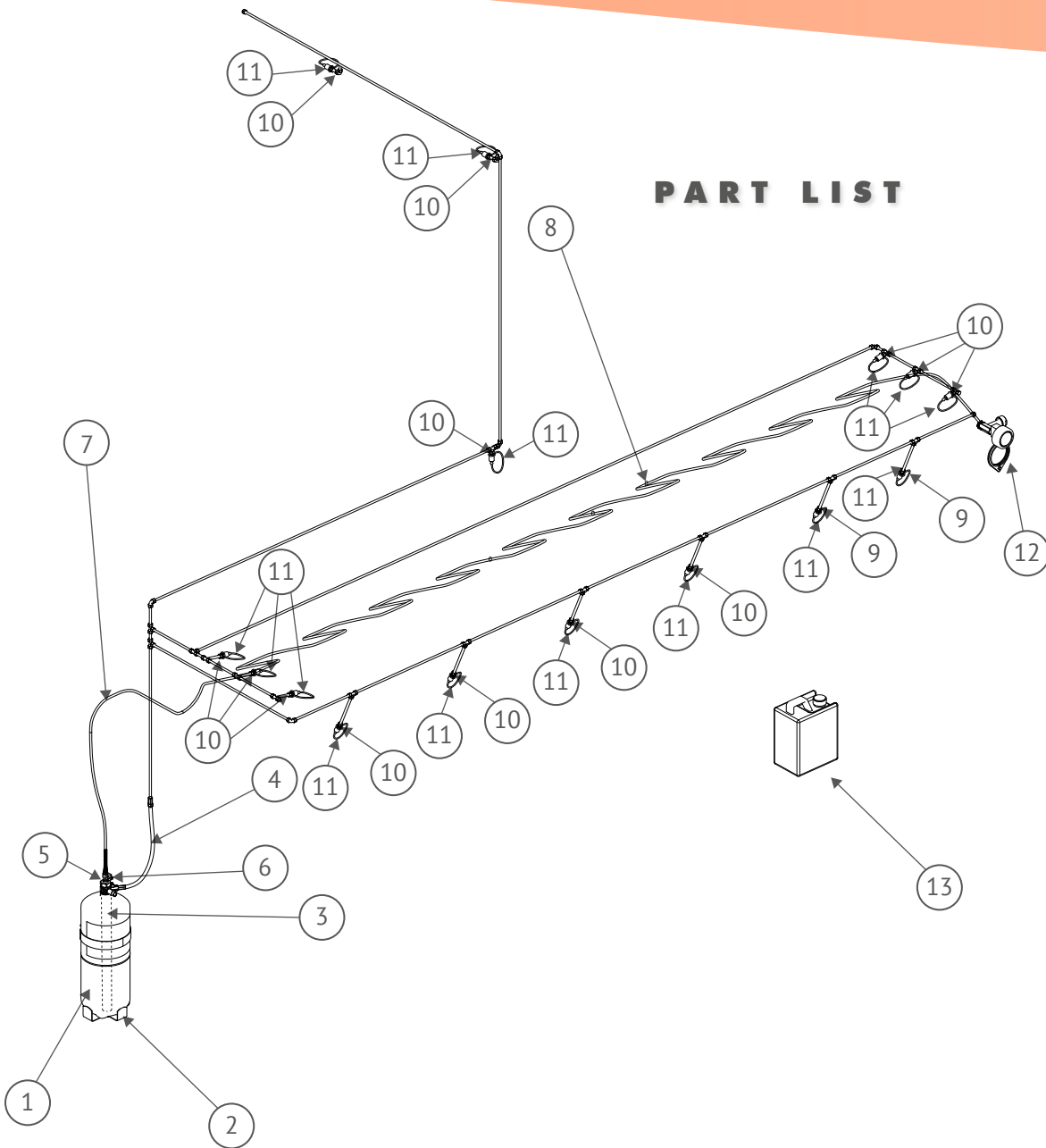


Box content.

Top part of the kitchen



- **Efficient extinguishing**
 - **Total coverage**
 - **Double effect: cooling + fire containment**
 - **Permanent system**
 - **Independent system**
 - >> No need of electric power
- Total and instant detection**
- >> Any part of the system detects the start of the fire.



PART LIST

SPECIFICATIONS

ELITE-K12

propellant agent	N2
extinguisher agent	class F
cylinder volume	13,42 L
quantity of additive	10 L
pressure of the system	17,5 (+20°C)
temperature bursting tube	110
temperature range	+5°C/+60°C
weight of full cylinder	18 kg

n°	quantity	description
	elite-k12	
1	1	cylinder
2	1	cylinder bracket
3	1	dip tube
4	1	hose
5	1	valve + preasure gauge
6	1	agent shut-off valve
7	10 m	sensor tube
8	20	sensor tube bracket
9	2	nozzle type B
10	13	nozzle type F
11	15	nozzle protection
12	1	End of line and button
13	10 liters	elite K additive



elitex[®]
tu marca de seguridad

Elitex Protection, S.L.
Carretera Nacional 320 km. 133,5
16003 Cuenca · ESPAÑA
Tel. +34 969 210 136 · info@elitex.es
www.elitex.es

